

# Directors

## HEAD OFFICE BOARD

**Paul DeBruce**  
*Chair and Federal Reserve Agent*  
 CEO and Founder  
 DeBruce Grain, Inc.  
 Kansas City, Missouri

## DENVER BOARD

**Larissa L. Herda**  
*Chair of Branch Board*  
 Chair, CEO and President  
 tw telecom, inc.  
 Littleton, Colorado

## OKLAHOMA CITY BOARD

**James D. Dunn**  
*Chair of Branch Board*  
 Chair  
 Mill Creek Lumber & Supply  
 Company  
 Tulsa, Oklahoma

## OMAHA BOARD

**James C. Farrell**  
*Chair of Branch Board*  
 President and CEO  
 Farmers National Company  
 Omaha, Nebraska

**Barbara Mowry**  
*Deputy Chair*  
 CEO  
 GoreCreek Advisors  
 Greenwood Village, CO

**Terry L. Moore**  
 President  
 Omaha Federation of  
 Labor, AFL-CIO  
 Omaha, Nebraska

**David Brownback**  
 President and CEO  
 Citizens State Bank &  
 Trust Company  
 Ellsworth, Kansas

**Richard K. Ratcliffe**  
 Chairman  
 Ratcliffe's Inc.  
 Weatherford, Oklahoma

**Mark Gordon**  
 Owner  
 Merlin Ranch  
 Buffalo, Wyoming

**John T. Stout, Jr.**  
 CEO  
 Plaza Belmont  
 Management Group  
 Shawnee Mission,  
 Kansas

**John A. Ikard**  
 President and CEO  
 FirstBank Holding  
 Company  
 Lakewood, Colorado

**Max T. Wake**  
 President  
 Jones National Bank &  
 Trust Company  
 Seward, Nebraska

**Charles H. Brown III**  
 President  
 C.H. Brown Company  
 Wheatland, Wyoming

**Anne Haines**  
 Yatskowitz  
 President and CEO  
 ACCION New Mexico-  
 Arizona-Colorado  
 Albuquerque,  
 New Mexico

**Margaret Kelly**  
 CEO  
 RE/MAX, LLC  
 Denver, Colorado

**Richard L. Lewis**  
 President and CEO  
 RTL Networks, Inc.  
 Denver, Colorado

**Brian R. Wilkinson**  
 President  
 Steele Street Bank &  
 Trust  
 Denver, Colorado

**Mark A. Zaback**  
 President and CEO  
 Jonah Bank of Wyoming  
 Casper, Wyoming

**Linda Capps**  
 Vice Chairman  
 Citizen Potawatomi  
 Nation  
 Shawnee, Oklahoma

**Peter B. Delaney**  
 Chairman, CEO and  
 President  
 OGE Energy Corp.  
 Oklahoma City,  
 Oklahoma

**Jacqueline R. Fiegel**  
 Senior Executive  
 Vice President and  
 COO  
 Coppermark Bank  
 Oklahoma City,  
 Oklahoma

**Douglas E. Tippens**  
 President and CEO  
 Bank of Commerce  
 Yukon, Oklahoma

**K. Vasudevan**  
 Chairman and Founder  
 Service and Technology  
 Corporation  
 Bartlesville, Oklahoma

**Rose M. Washington**  
 Executive Director  
 Tulsa Economic  
 Development Corp.  
 Tulsa, Oklahoma

**Todd S. Adams**  
 CEO  
 Adams Bank &  
 Trust  
 Ogallala, Nebraska

**Jeff W. Krejci**  
 President  
 First State Bank  
 Hickman, Nebraska

**JoAnn M. Martin**  
 Chair, President and  
 CEO  
 Ameritas Life  
 Insurance Corp.  
 Lincoln, Nebraska

**Natalia J. Peart**  
 CEO  
 Women's Center for  
 Advancement  
 Omaha, Nebraska

**G. Richard Russell**  
 President and CEO  
 Millard Lumber, Inc.  
 Omaha, Nebraska

**James Thom**  
 Vice President  
 T-L Irrigation Company  
 Hastings, Nebraska

## COMMITTEE ROSTER FOR 2012

### AUDIT COMMITTEE

**Richard K. Ratcliffe**, *Chair*  
**Max T. Wake**, *Vice Chair*  
**Mark Gordon**  
**John A. Ikard**  
**Barbara Mowry**

### BUILDINGS COMMITTEE

**Terry L. Moore**, *Chair*  
**David W. Brownback**

### COMPENSATION COMMITTEE

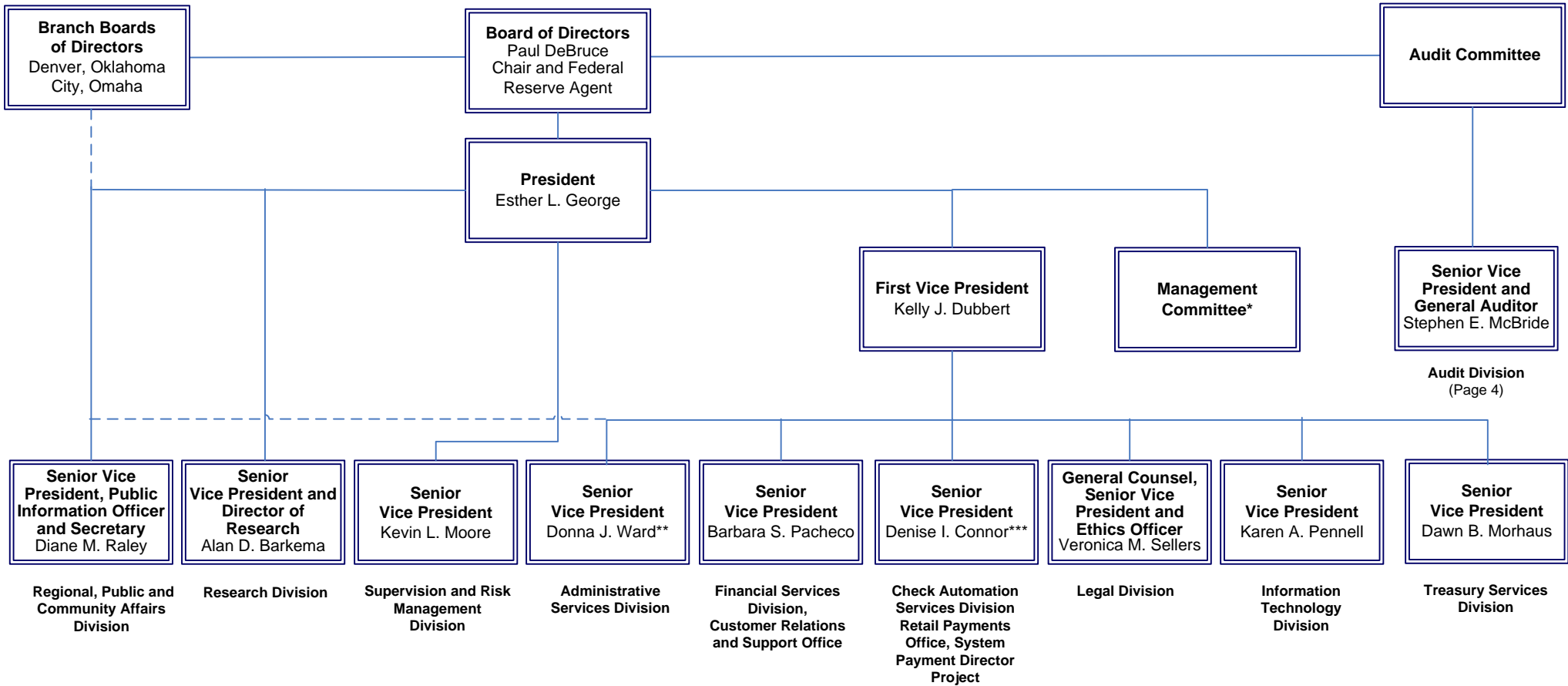
**Paul DeBruce**, *Chair*  
**Barbara Mowry**  
**John T. Stout, Jr.**

**Note:** Chair DeBruce is an *ex officio* member of each standing committee.

### FEDERAL ADVISORY COUNCIL MEMBER

**Stanley A. Lybarger**  
 President & CEO  
 BOK Financial Corp.  
 Bank of Oklahoma  
 Tulsa, Oklahoma

# Organization



\* Management Committee members include: Esther L. George, Kelly J. Dubbert, Alan D. Barkema, Denise I. Connor, Kevin L. Moore, Dawn Morhaus, Barbara S. Pacheco, Karen A. Pennell, Diane M. Raley, Donna J. Ward, Veronica M. Sellers (Advisor), and Stephen E. McBride (General Auditor).

\*\* Director of the Office of Minority and Women Inclusion

\*\*\* Retail Payments Office (RPO) Chief Information Officer